

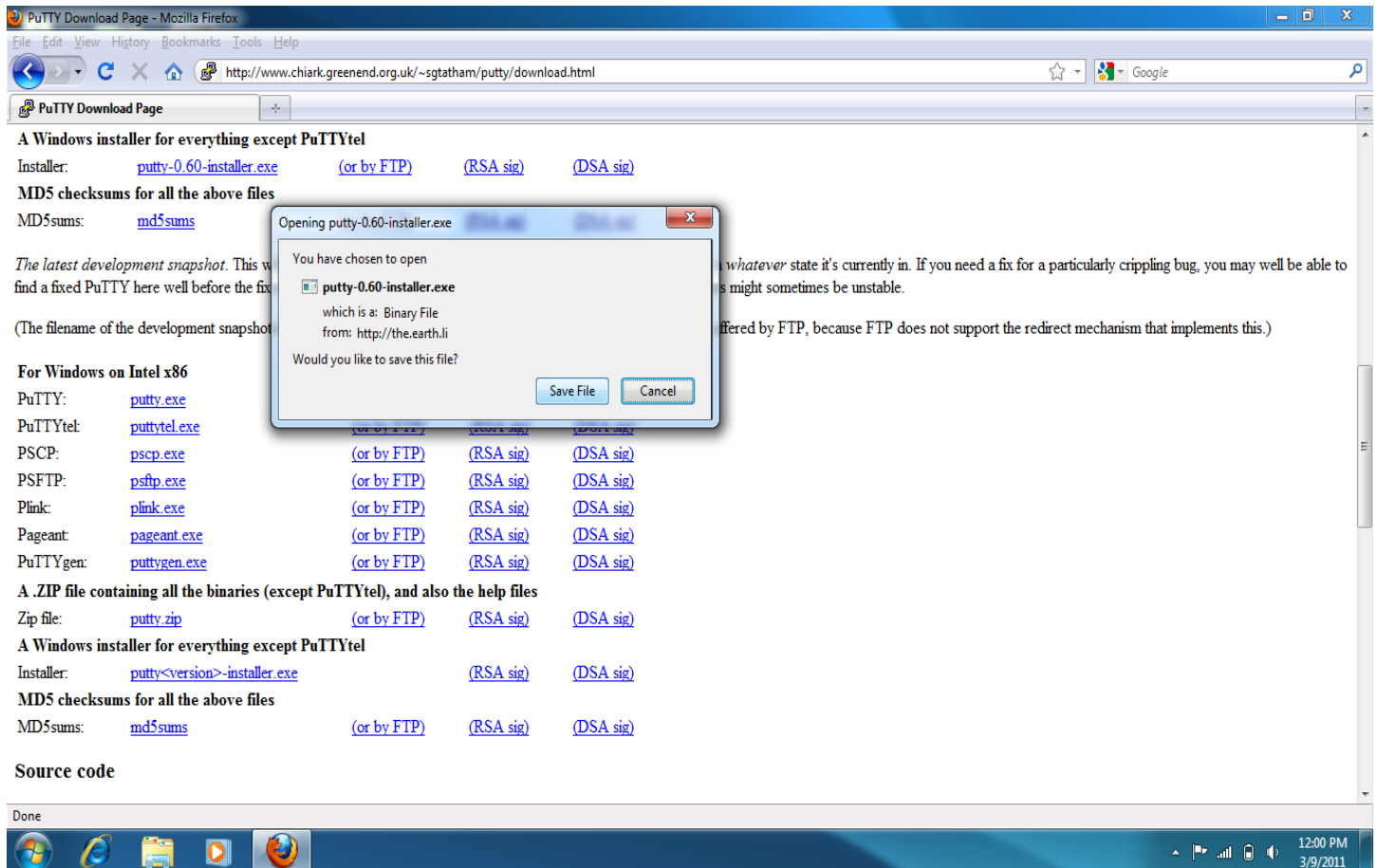
How to start an X Window Session over SSH using Putty on Windows

Electrical & Computer Engineering Department, UNM

Computer Support Group Documentation

We will first begin by installing the programs required for the whole procedure. Open your favorite web browser and download the Putty Windows Installer located at <http://www.chiark.greenend.org.uk/~sgtatham/putty/download.html>

In this tutorial, we are using Firefox 3.6.15 on Windows 7.



How to start an X Window Session over SSH using Putty on Windows

Electrical & Computer Engineering Department, UNM

Computer Support Group Documentation

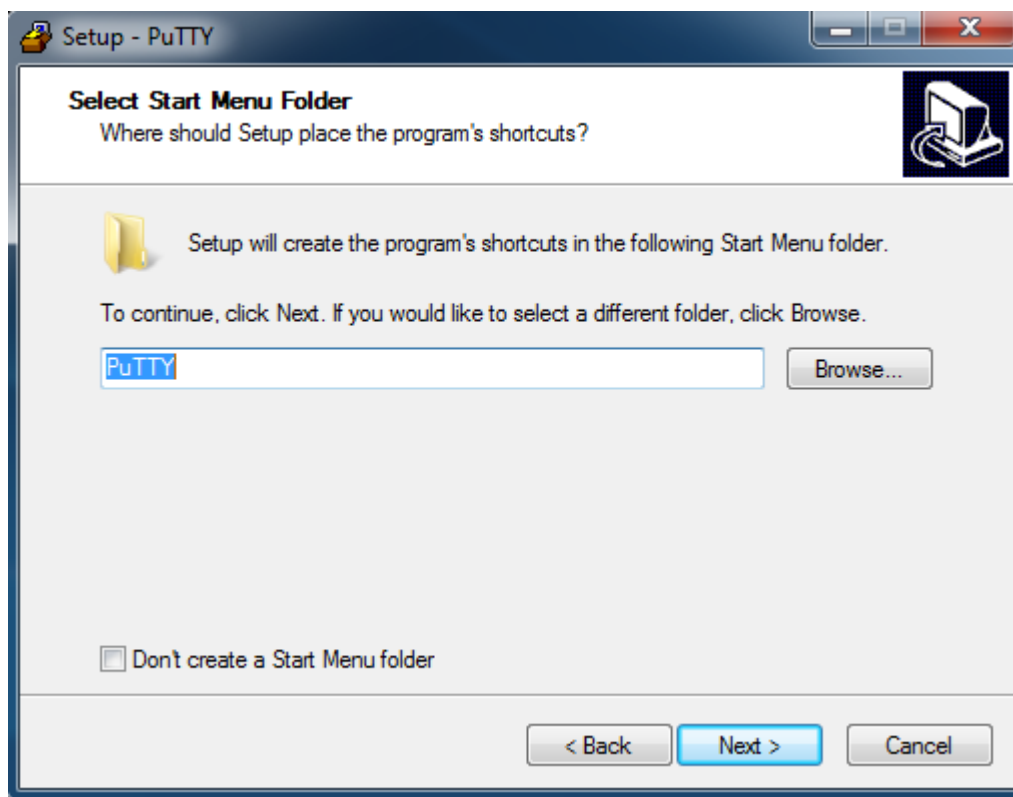
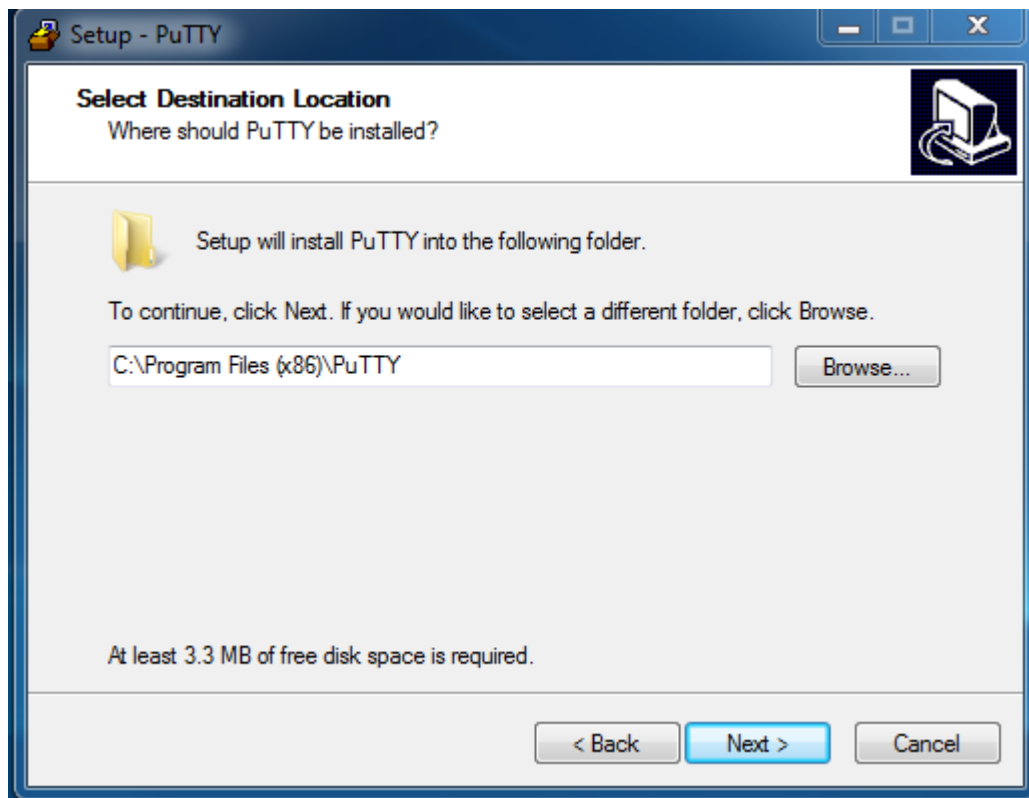
Run the putty-<version>-installer.exe and follow the on screen instructions. Below are the screenshots for a typical installation.



How to start an X Window Session over SSH using Putty on Windows

Electrical & Computer Engineering Department, UNM

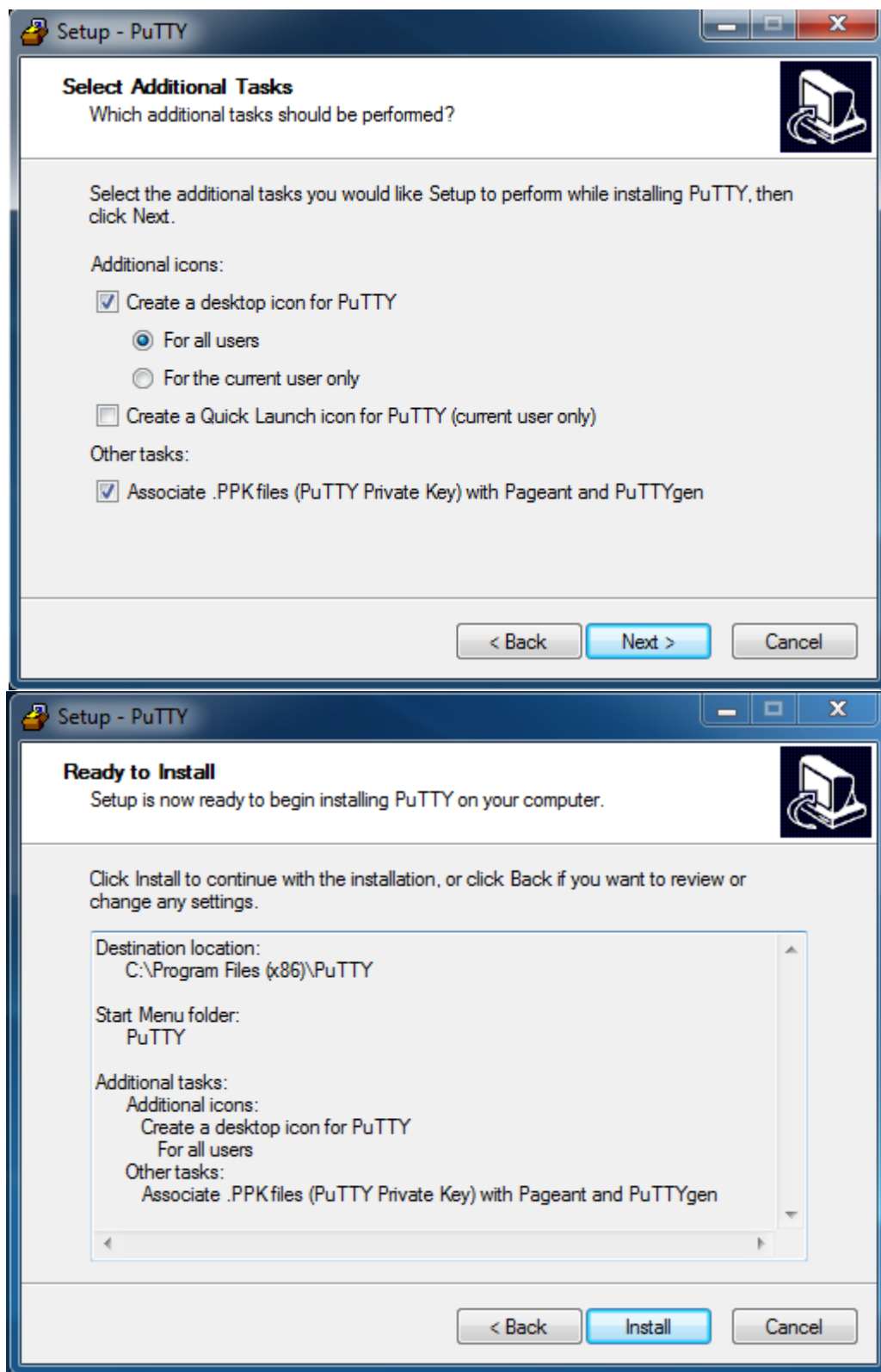
Computer Support Group Documentation



How to start an X Window Session over SSH using Putty on Windows

Electrical & Computer Engineering Department, UNM

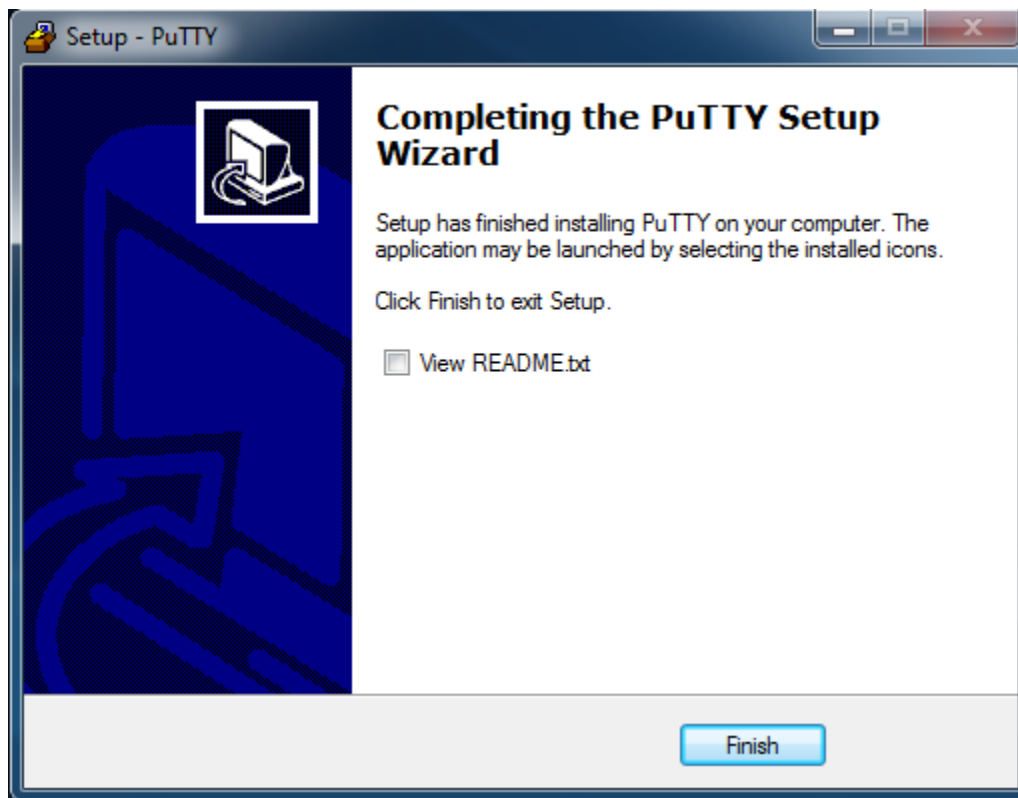
Computer Support Group Documentation



How to start an X Window Session over SSH using PuTTY on Windows

Electrical & Computer Engineering Department, UNM

Computer Support Group Documentation

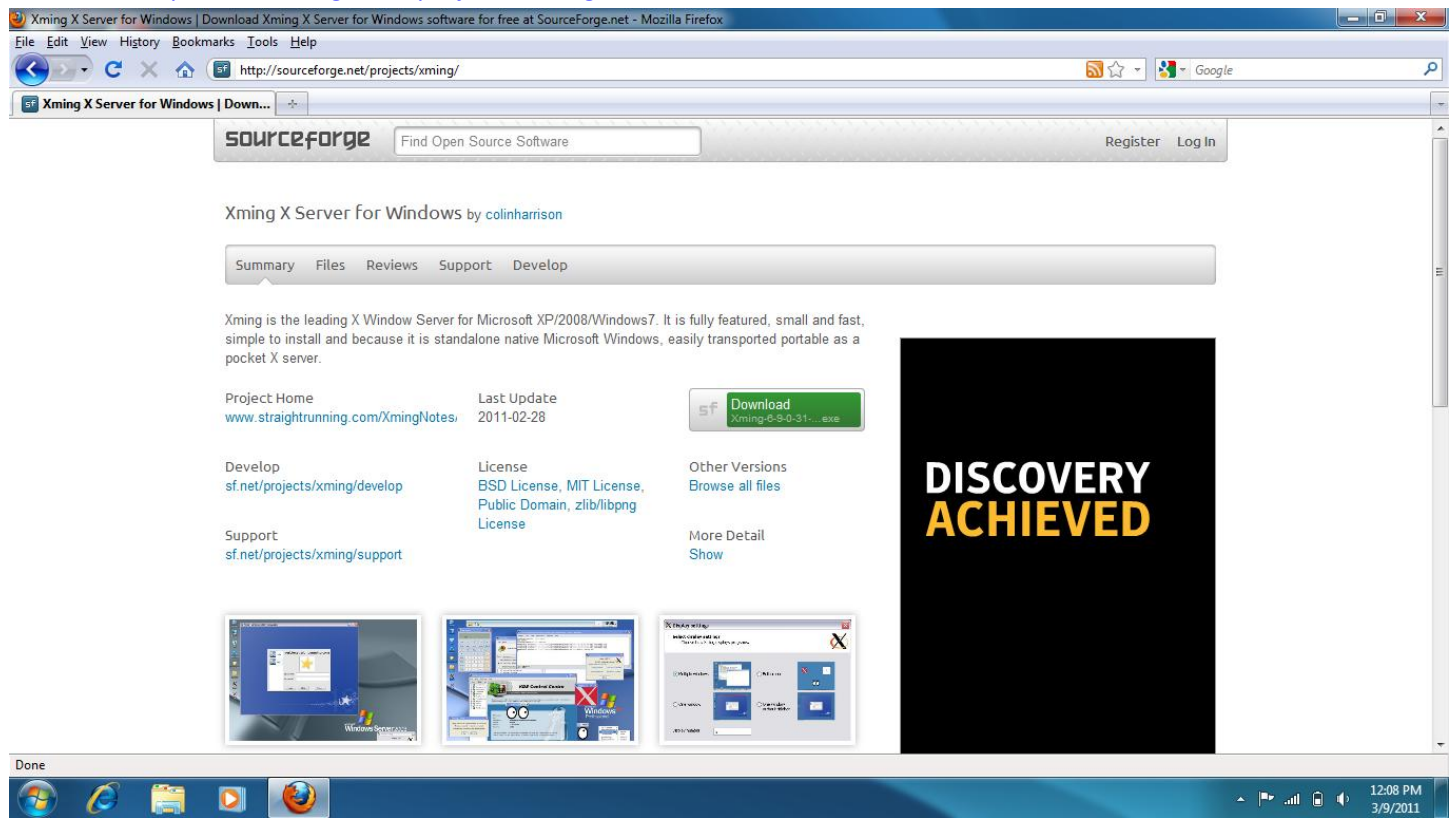


How to start an X Window Session over SSH using Putty on Windows

Electrical & Computer Engineering Department, UNM

Computer Support Group Documentation

Then we have to download and install Xming X server which is an X Window Server program. Download Xming program located at <http://sourceforge.net/projects/xming/>

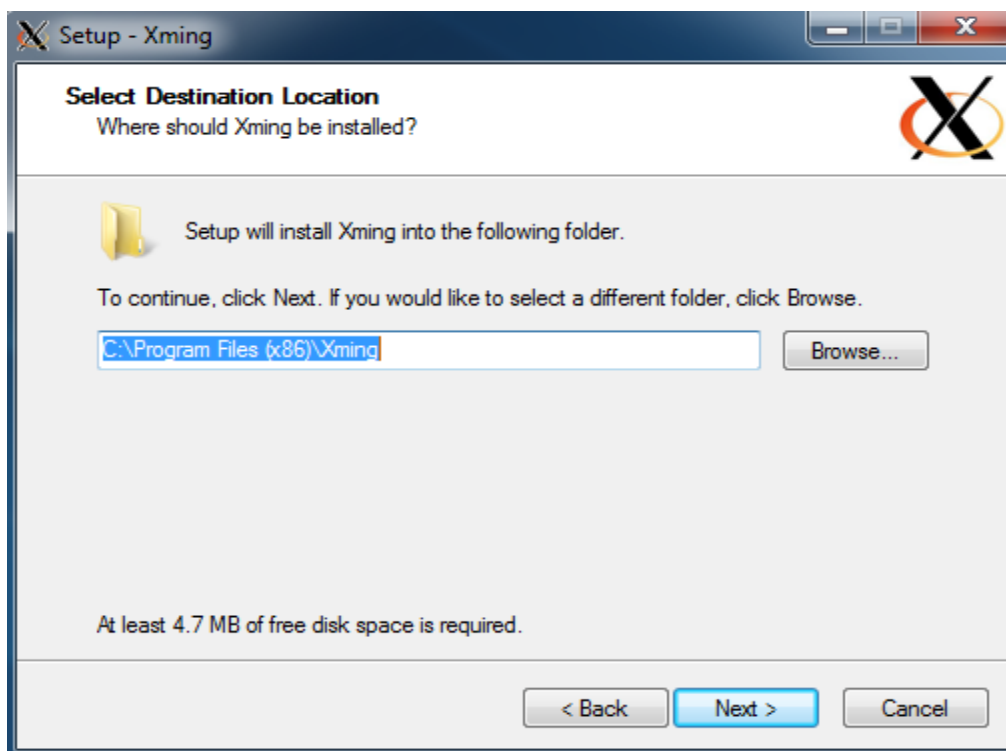


How to start an X Window Session over SSH using Putty on Windows

Electrical & Computer Engineering Department, UNM

Computer Support Group Documentation

Below are the screenshots for the installation procedure.

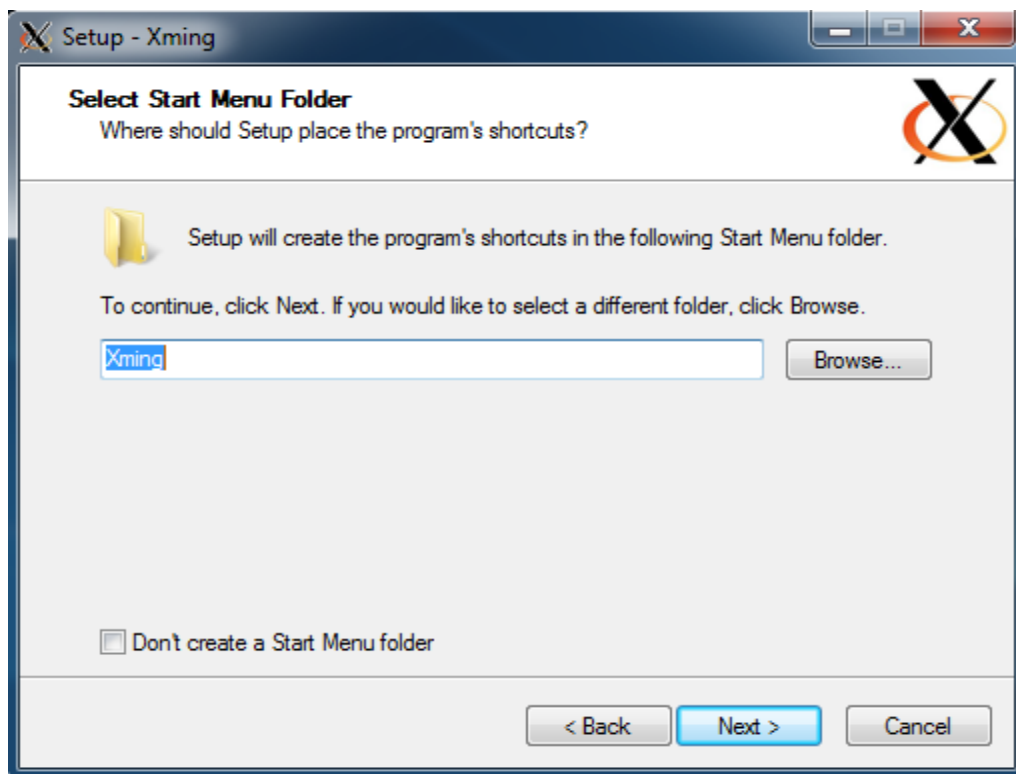
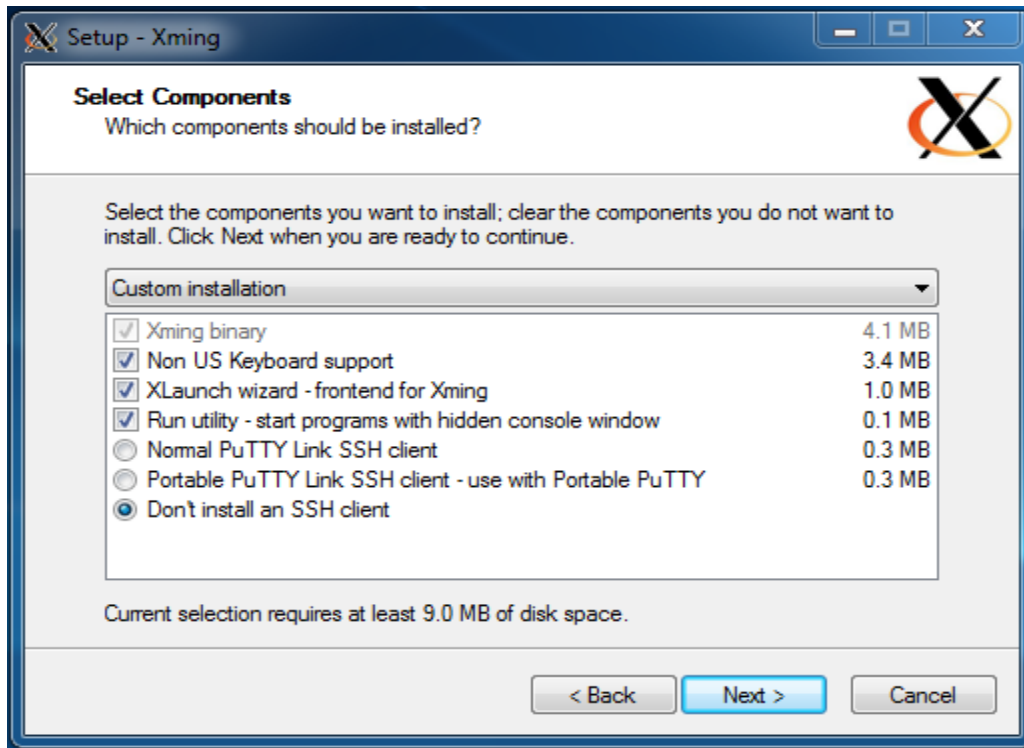


How to start an X Window Session over SSH using Putty on Windows

Electrical & Computer Engineering Department, UNM

Computer Support Group Documentation

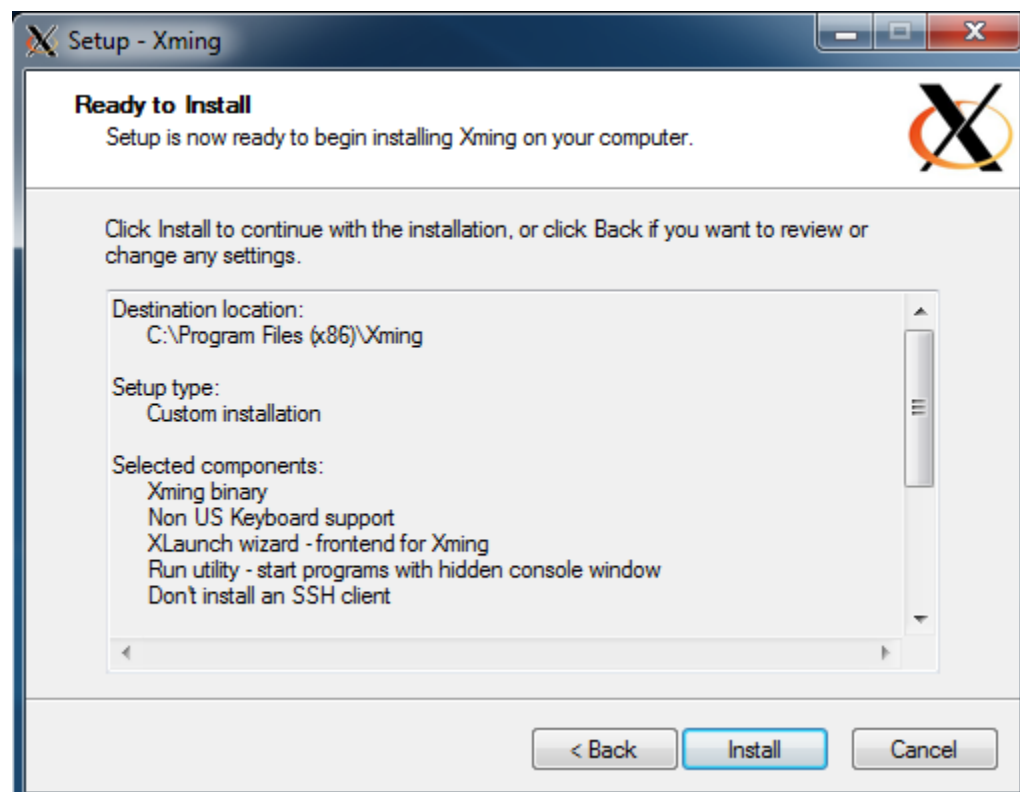
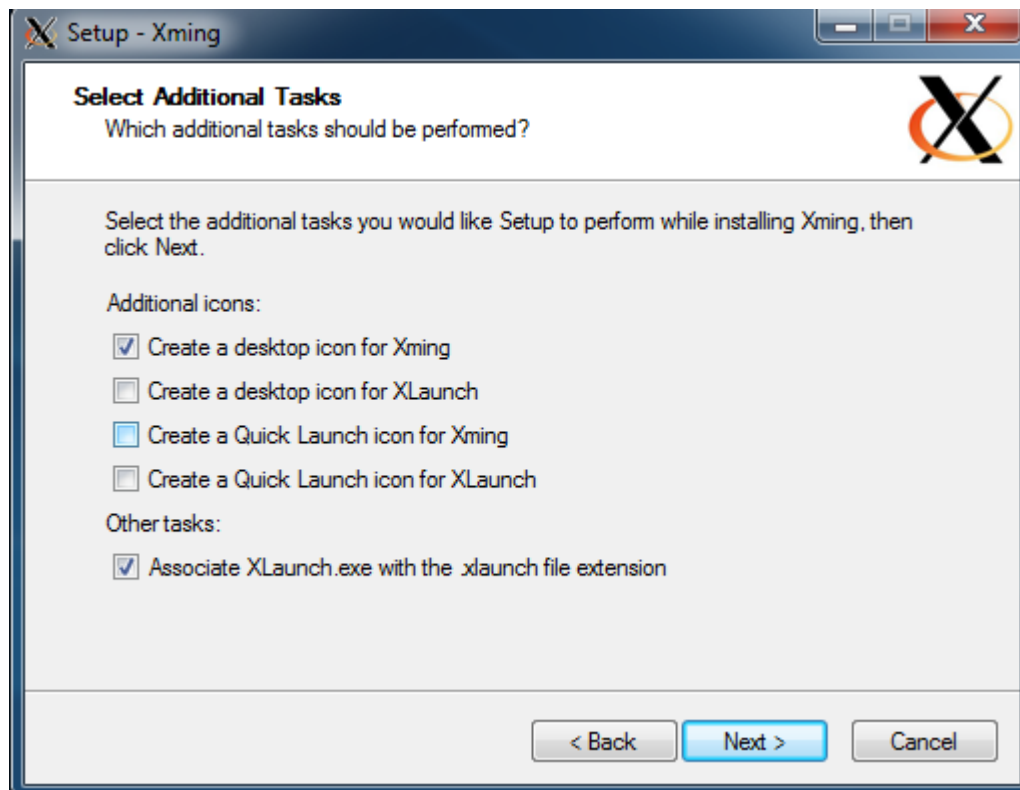
Select Don't install an SSH Client



How to start an X Window Session over SSH using Putty on Windows

Electrical & Computer Engineering Department, UNM

Computer Support Group Documentation



How to start an X Window Session over SSH using Putty on Windows

Electrical & Computer Engineering Department, UNM

Computer Support Group Documentation



How to start an X Window Session over SSH using Putty on Windows

Electrical & Computer Engineering Department, UNM

Computer Support Group Documentation

After the installation is done launch Xming application from the shortcut on Desktop. Allow the program through the Windows Firewall if prompted. Then proceed to launch Putty application from the shortcut on Desktop.



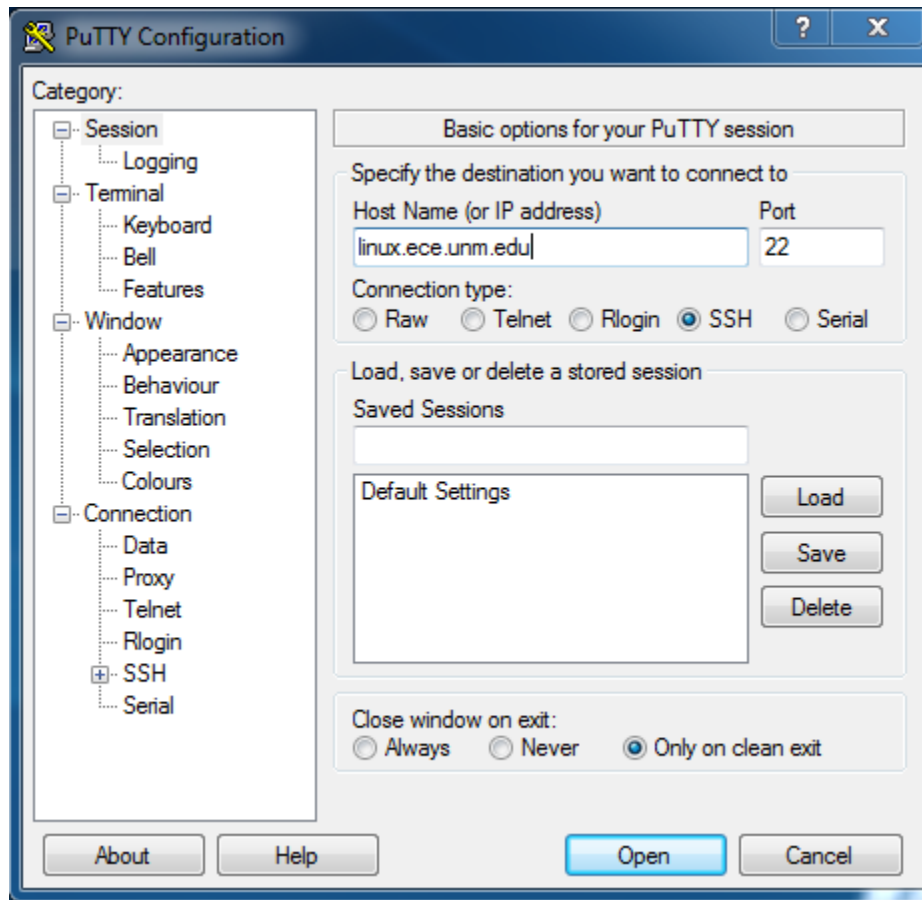
How to start an X Window Session over SSH using Putty on Windows

Electrical & Computer Engineering Department, UNM

Computer Support Group Documentation

You need to configure the following settings on Putty before you logon to the ECE linux server.

1. Specify the Host Name as linux.ece.unm.edu and the default Port is 22.

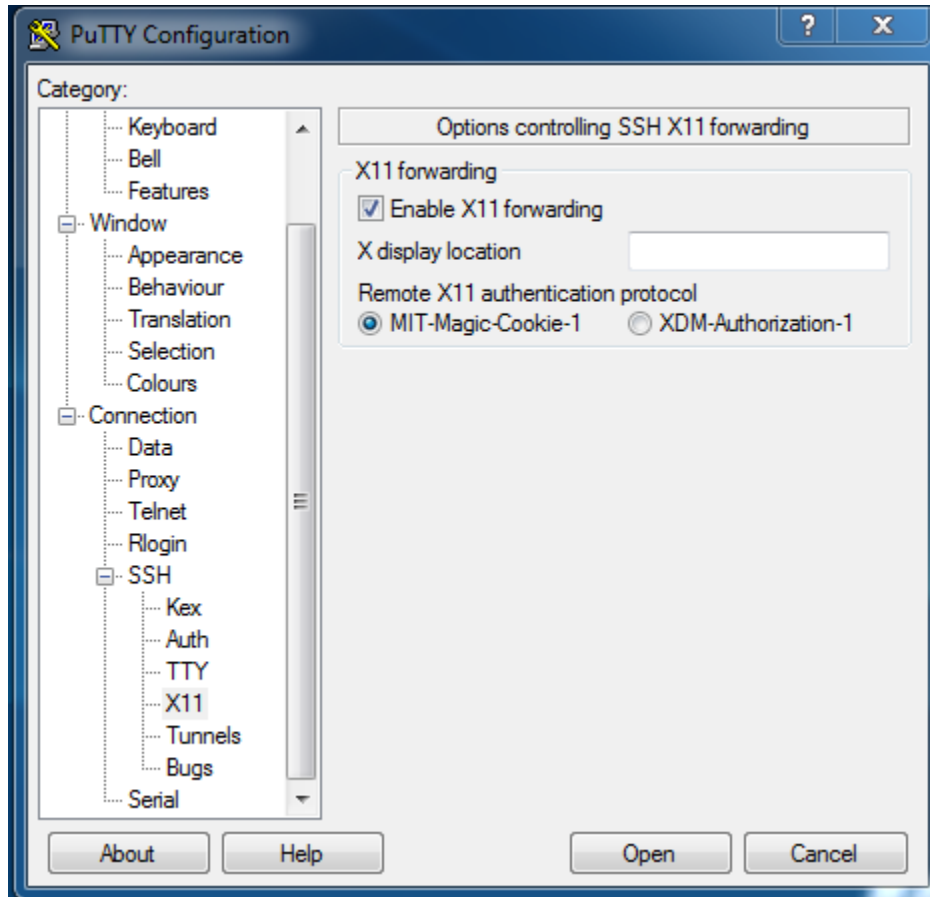


How to start an X Window Session over SSH using Putty on Windows

Electrical & Computer Engineering Department, UNM

Computer Support Group Documentation

2. Expand the SSH branch under Connection and click X11 and check the box to enable X11 forwarding.

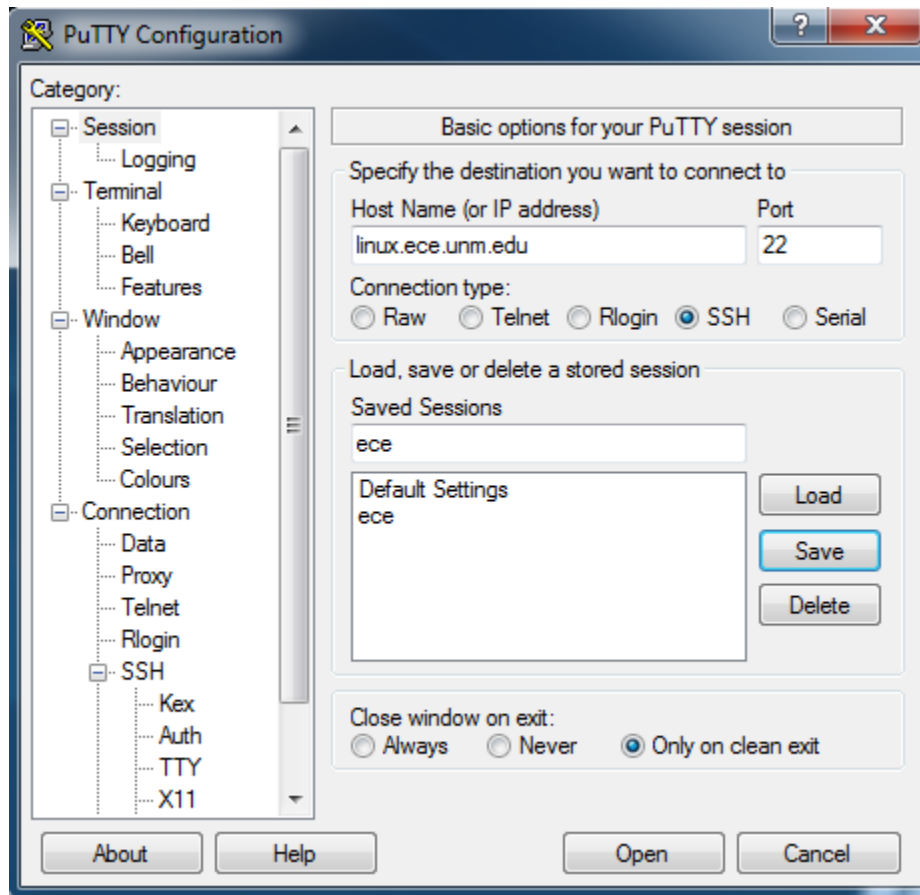


How to start an X Window Session over SSH using Putty on Windows

Electrical & Computer Engineering Department, UNM

Computer Support Group Documentation

3. Go back to Session branch on top and name this session and save it and then click open button.

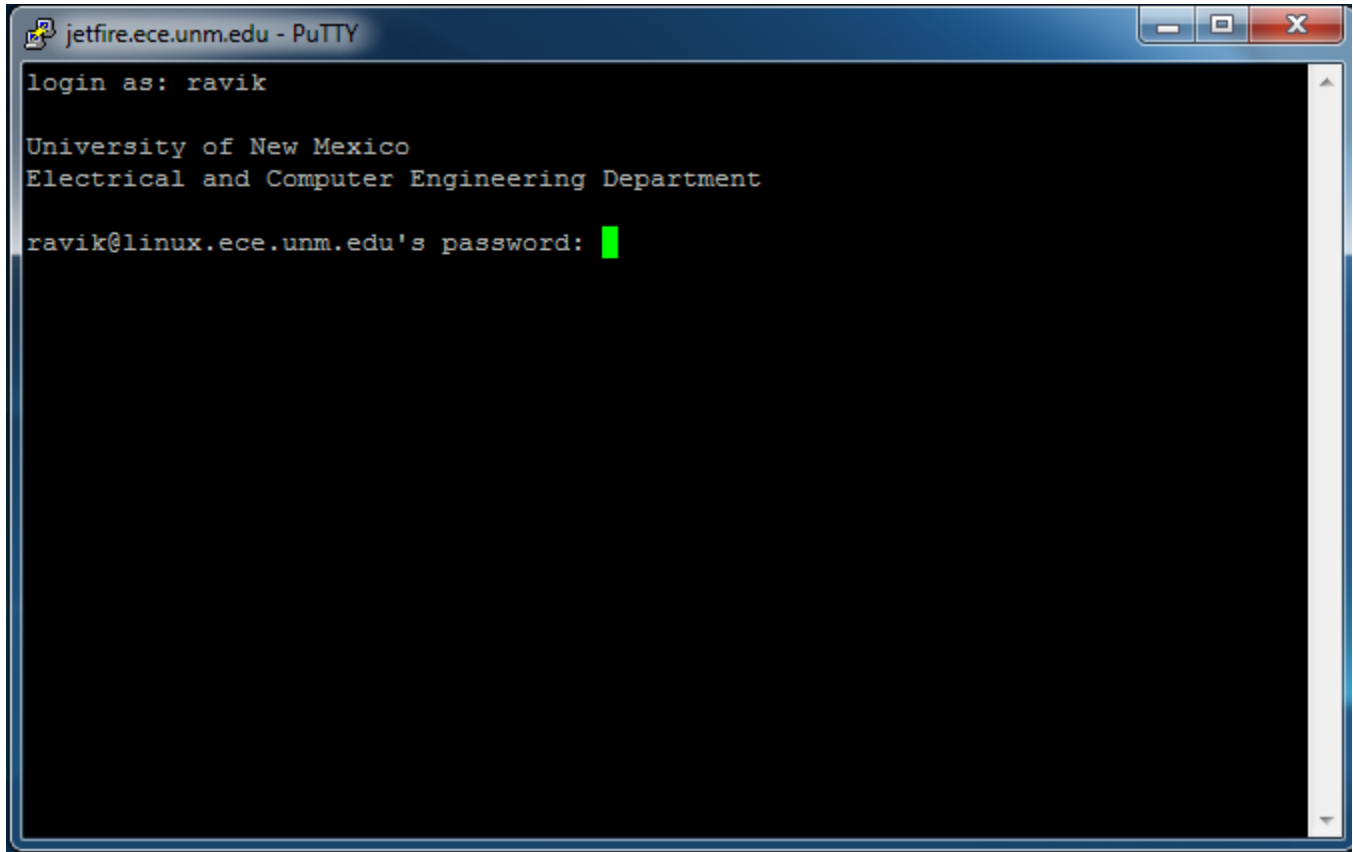


How to start an X Window Session over SSH using Putty on Windows

Electrical & Computer Engineering Department, UNM

Computer Support Group Documentation

Now type in your ece username and type enter. Also enter the password and if prompted to save the key press yes.

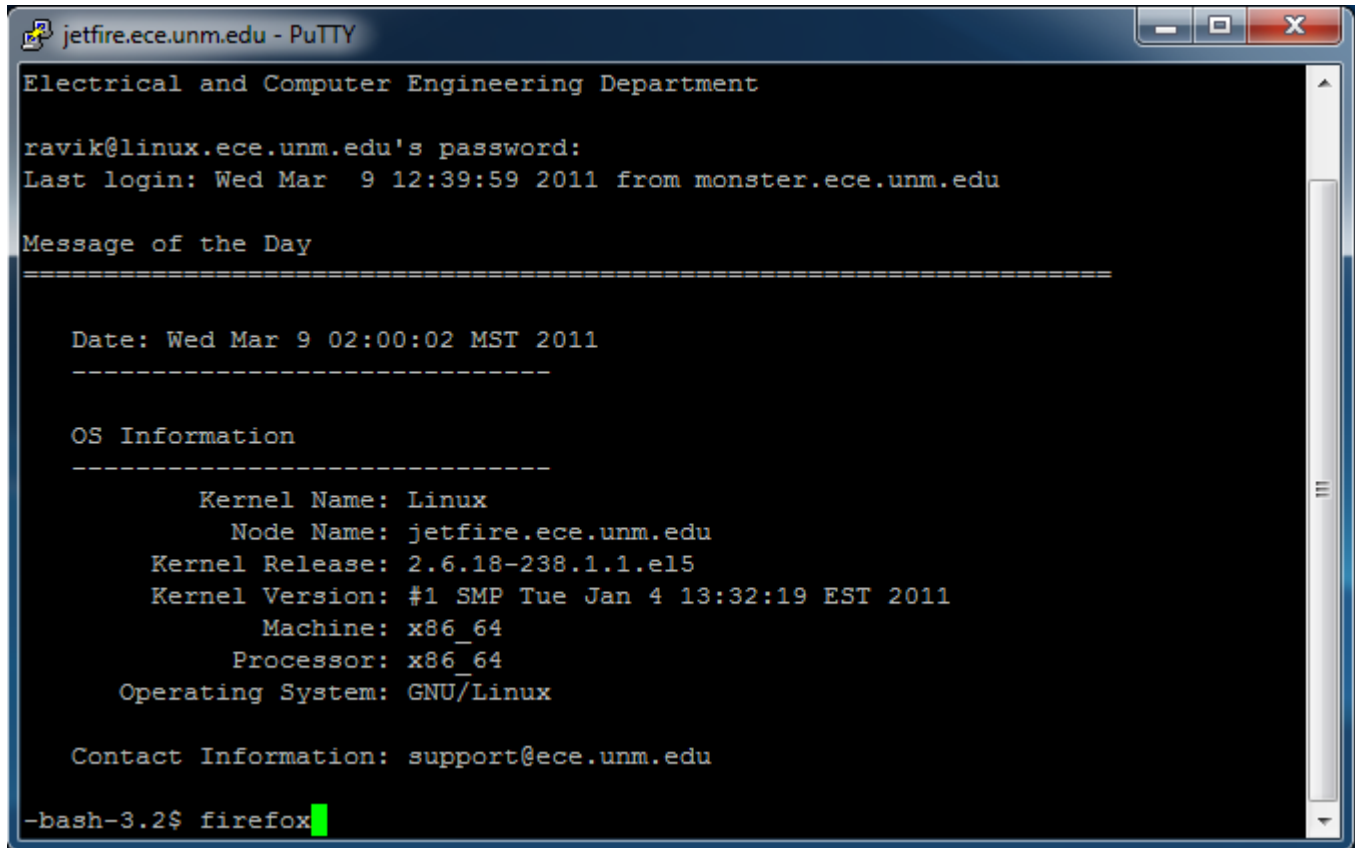


How to start an X Window Session over SSH using Putty on Windows

Electrical & Computer Engineering Department, UNM

Computer Support Group Documentation

To Test the X Window Server is working, type firefox at the command line.



```
jetfire.ece.unm.edu - PuTTY
Electrical and Computer Engineering Department

ravik@linux.ece.unm.edu's password:
Last login: Wed Mar  9 12:39:59 2011 from monster.ece.unm.edu

Message of the Day
=====

Date: Wed Mar  9 02:00:02 MST 2011
-----

OS Information
-----
    Kernel Name: Linux
    Node Name: jetfire.ece.unm.edu
    Kernel Release: 2.6.18-238.1.1.el5
    Kernel Version: #1 SMP Tue Jan  4 13:32:19 EST 2011
    Machine: x86_64
    Processor: x86_64
    Operating System: GNU/Linux

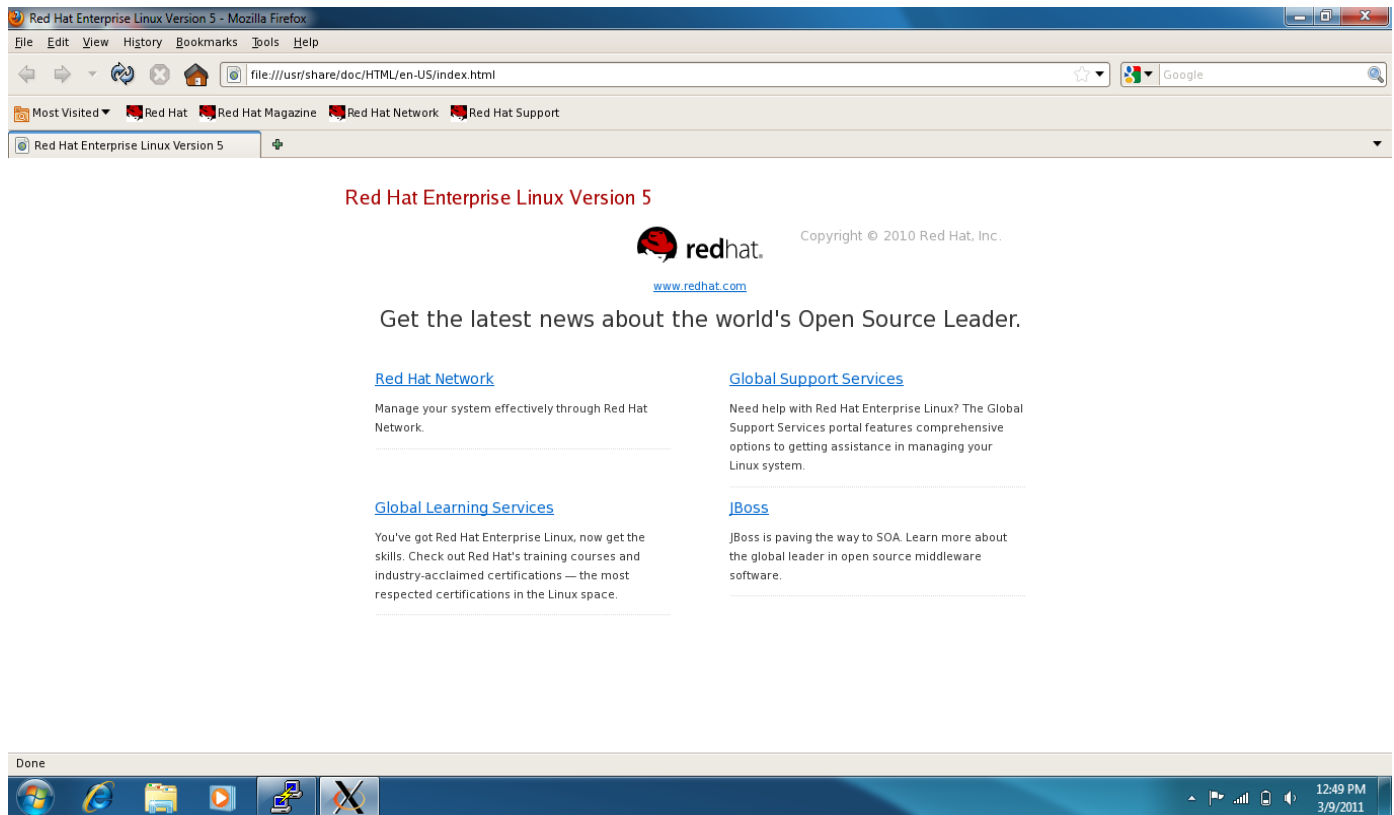
Contact Information: support@ece.unm.edu

-bash-3.2$ firefox
```


How to start an X Window Session over SSH using Putty on Windows

Electrical & Computer Engineering Department, UNM

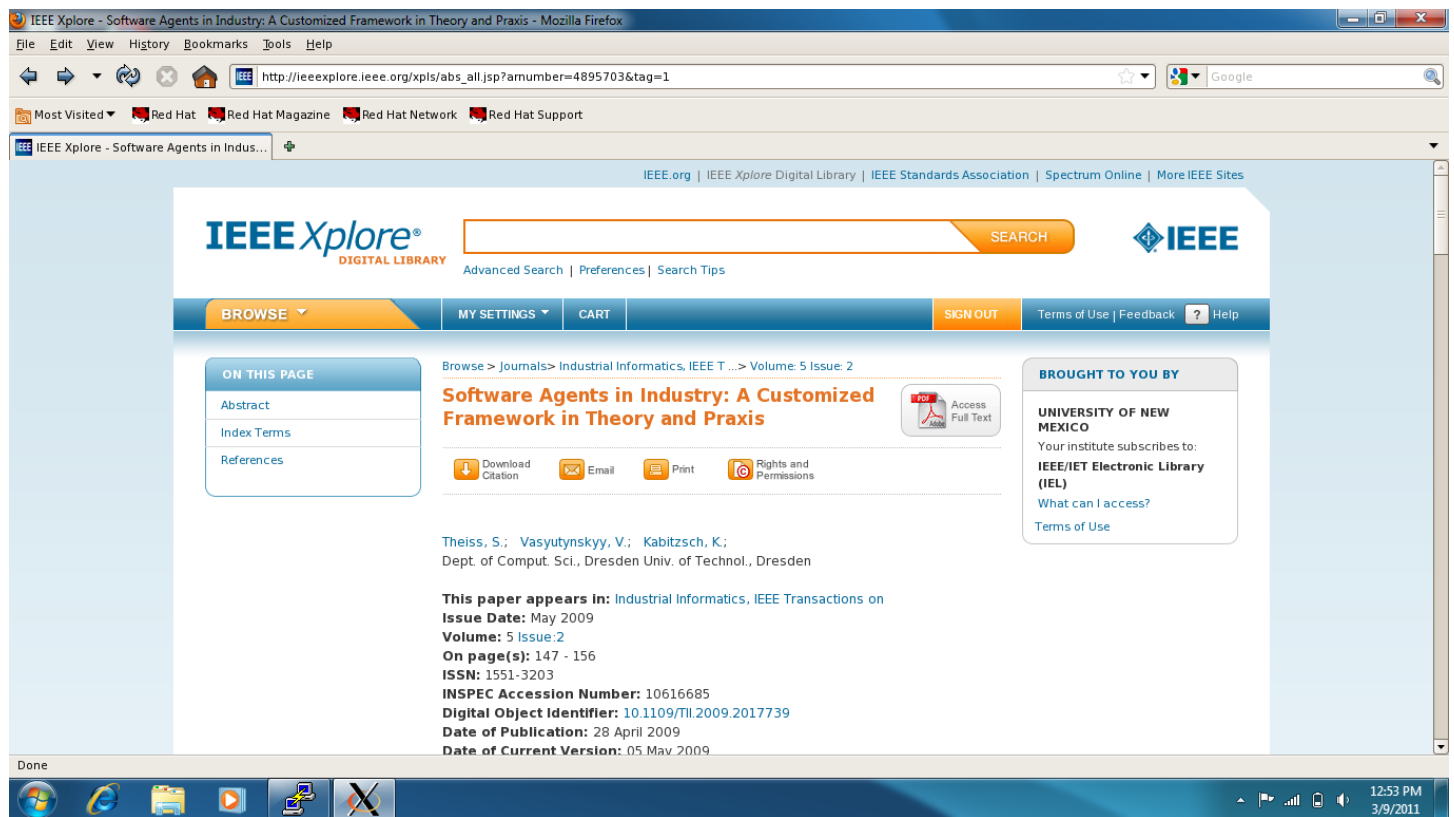
Computer Support Group Documentation



How to start an X Window Session over SSH using Putty on Windows

Electrical & Computer Engineering Department, UNM

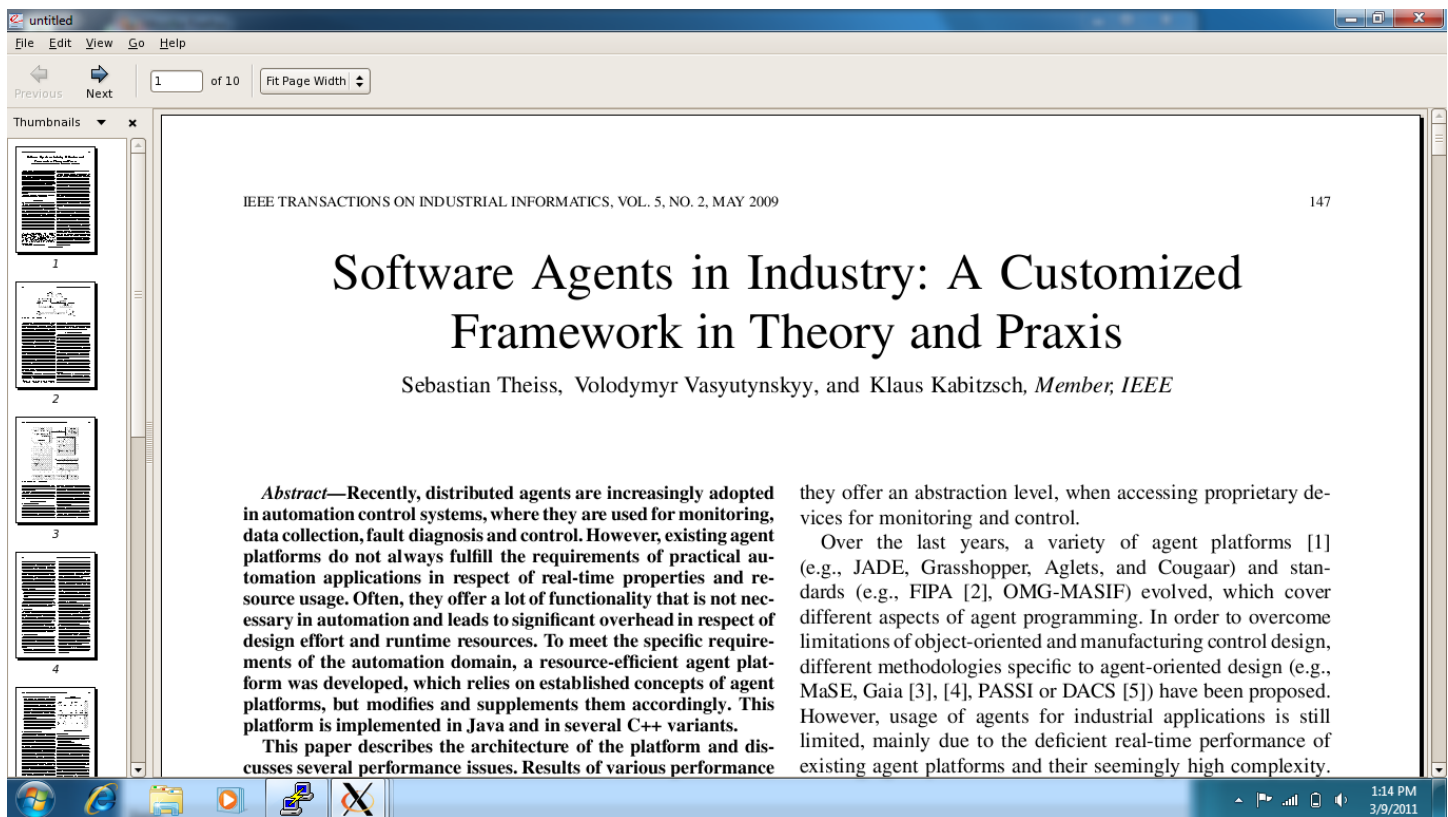
Computer Support Group Documentation



How to start an X Window Session over SSH using Putty on Windows

Electrical & Computer Engineering Department, UNM

Computer Support Group Documentation



If for any reason you are unable to accomplish the task, please email to

ece-support@ece.unm.edu or call 505-277-3934.